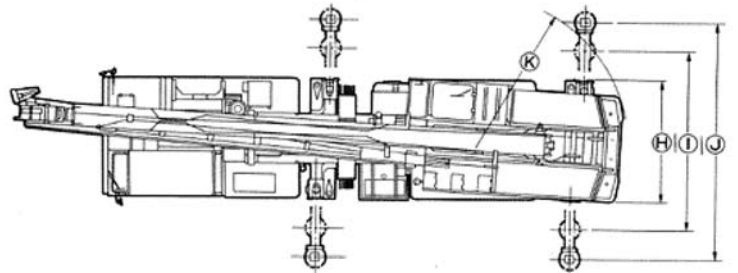
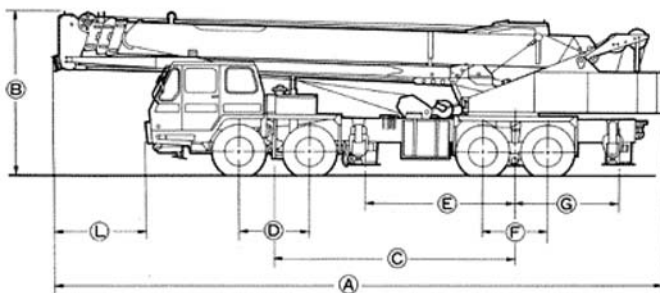
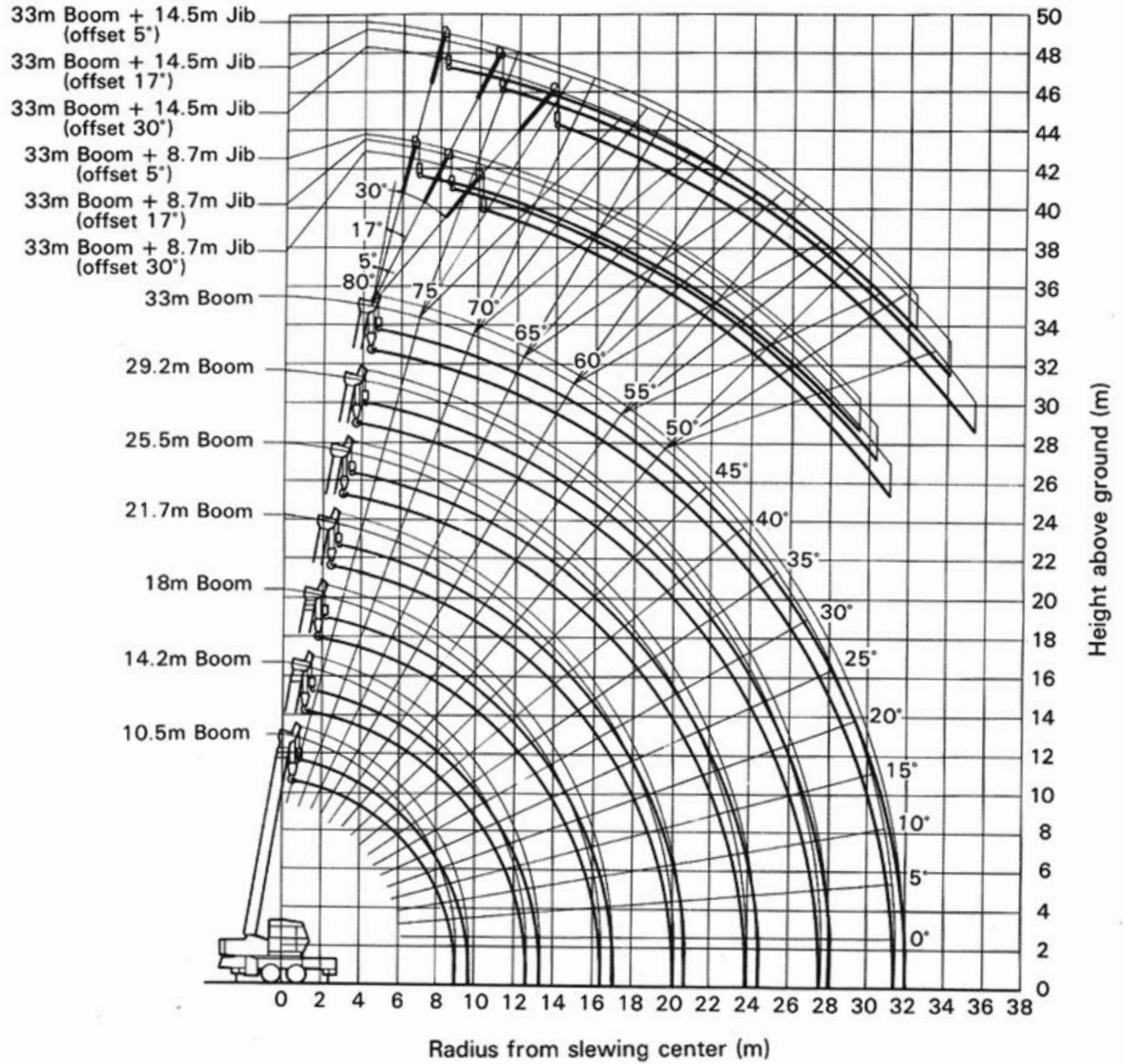


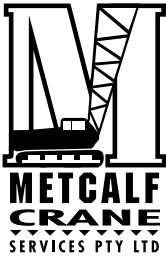
NK-300E-v

WORKING RANGE



Carrier name and model	A	B	C	D	E	F	G	H	I	J	K	L
Mitsubishi K303LA	12,580	3,450	5,000	1,450	3,100	1,350	2,150	2,500	4,100	6,100	3,395	1,800
Nissan Diesel KG45SXL	12,580	3,450	4,940	1,520	3,100	1,300	2,100	2,500	4,100	6,100	3,395	1,630

(Unit : mm)



NK-300E-V

RATED LIFTING CAPACITY

BASED ON * BS 1757 :1986
 * DIN 15019-2
 * 75% of tipping loads

Note: Front jack is optional.

Outriggers fully extended with front jack – 360° full range Outriggers fully extended without front jack – over side and over rear								Outriggers intermediately extended without front jack – 360° full range Outriggers fully extended without front jack – over front							
Working radius (m)	10.5 m Boom	14.2 m Boom	18 m Boom	21.7 m Boom	25.5 m Boom	29.2 m Boom	33 m Boom	Working radius (m)	10.5 m Boom	14.2 m Boom	18 m Boom	21.7 m Boom	25.5 m Boom	29.2 m Boom	33 m Boom
2.5	30.00	20.00	16.00					2.5	25.00	20.00	16.00				
3.0	30.00	20.00	16.00					3.0	25.00	20.00	16.00				
3.5	25.40	20.00	16.00	12.00				3.5	25.00	20.00	16.00	12.00			
4.0	22.90	20.00	16.00	12.00	11.50			4.0	22.90	20.00	16.00	12.00	11.50		
4.5	21.00	20.00	16.00	12.00	11.50			4.5	17.35	16.20	16.00	12.00	11.50		
5.0	19.40	18.40	16.00	12.00	11.50	9.00		5.0	14.00	13.60	13.45	12.00	11.50	9.00	
6.0	16.20	15.30	13.70	12.00	11.50	9.00	7.00	5.5	11.60	11.40	11.20	12.00	11.50	9.00	
7.0	13.70	12.65	11.95	11.00	10.00	9.00	7.00	6.0	10.00	9.80	9.60	10.20	10.10	9.00	7.00
8.0	11.15	10.65	10.55	10.20	8.90	8.20	7.00	6.5	8.50	8.50	8.15	8.95	9.10	9.00	7.00
8.5	10.25	9.70	9.65	9.65	8.45	7.80	6.60	7.0	7.55	7.25	7.15	7.80	8.10	8.30	7.00
9.0		8.80	8.80	9.20	8.05	7.45	6.25	7.5	6.50	6.40	6.20	6.85	7.25	7.35	7.00
10.0		7.30	7.15	7.65	7.30	6.75	5.70	8.5	5.00	4.95	4.85	5.40	5.75	5.85	5.80
12.0		5.10	4.95	5.40	5.65	5.65	4.80	9.0		4.35	4.30	4.80	5.10	5.25	5.30
12.5		4.70	4.55	5.05	5.25	5.45	4.55	10.0		3.45	3.35	3.85	4.10	4.30	4.40
13.0			4.20	4.65	4.90	5.05	4.45	12.0		2.10	1.95	2.45	2.70	2.90	3.05
14.0			3.55	4.00	4.25	4.40	4.10	12.5		1.70	1.70	2.15	2.40	2.65	2.80
16.0			2.55	2.95	3.20	3.40	3.50	13.0			1.40	1.90	2.15	2.40	2.55
18.0				2.20	2.45	2.65	2.80	14.0			0.95	1.40	1.70	1.95	2.10
20.0				1.65	1.85	2.05	2.20	15.0			0.55	1.05	1.30	1.55	1.75
22.0					1.40	1.60	1.70	16.0				0.70	1.00	1.20	1.40
24.0						1.20	1.35	17.0				0.40	0.70	0.95	1.10
26.0						0.90	1.00	18.0					0.45	0.70	0.85
27.5						0.70	0.85	19.0						0.45	0.60
29.0							0.65	20.0							0.40
31.0							0.45								
Standard hook	for 30 ton							Standard hook	for 30 ton						
Hook weight	300 kg							Hook weight	300 kg						
Parts line	10	8			4			Parts line	10	8			4		
Critical boom angle	–	–	–	–	–	–	–	Critical boom angle	–	–	–	25°	35°	42°	47°

(Unit: Metric ton)

(Unit: Metric ton)

Outriggers fully extended with front jack – 360° full range Outriggers fully extended without front jack – over side and over rear						
Boom angle (°)	33 m Boom + 8.7 m Jib					
	Offset 5°		Offset 17°		Offset 30°	
	Working radius (m)	Load (t)	Working radius (m)	Load (t)	Working radius (m)	Load (t)
80.0	8.0	3.00	9.6	2.20	11.3	1.60
76.0	11.0	3.00	12.5	2.20	14.0	1.60
74.0	12.5	2.72	14.0	2.05	15.3	1.54
70.0	15.3	2.26	16.6	1.78	18.0	1.45
66.0	18.0	1.92	19.2	1.57	20.4	1.30
62.0	20.5	1.68	21.8	1.38	22.8	1.17
58.0	23.0	1.48	24.1	1.24	25.0	1.06
56.0	24.0	1.28	25.2	1.18	26.0	1.02
54.0	25.1	1.08	26.3	1.00	27.1	0.98
50.0	27.2	0.74	28.2	0.70	29.0	0.67
46.0	29.2	0.47	30.1	0.44	30.7	0.43
43.0	30.6	0.30	31.5	0.30	32.0	0.30
Standard hook	for 3 ton					
Hook weight	60 kg					
Parts line	1					
Critical boom angle	40°					

(Unit: Metric ton)

Outriggers fully extended with front jack – 360° full range Outriggers fully extended without front jack – over side and over rear						
Boom angle (°)	33 m Boom + 14.5 m Jib					
	Offset 5°		Offset 17°		Offset 30°	
	Working radius (m)	Load (t)	Working radius (m)	Load (t)	Working radius (m)	Load (t)
80.0	9.9	2.00	12.5	1.30	15.1	0.90
77.7	12.0	2.00	14.5	1.30	16.9	0.90
76.3	13.2	1.85	15.7	1.24	18.0	0.90
72.0	16.4	1.50	19.0	1.06	21.2	0.81
68.0	19.5	1.25	22.0	0.91	24.0	0.74
64.0	22.6	1.06	24.8	0.79	26.6	0.67
60.0	25.4	0.90	27.4	0.70	29.1	0.60
56.0	28.0	0.77	29.9	0.64	31.5	0.55
52.0	30.7	0.66	32.4	0.57	33.7	0.52
51.0	31.2	0.61	33.0	0.55	34.2	0.51
50.4	31.6	0.57	33.3	0.52	34.5	0.50
48.0	32.9	0.45	34.5	0.40	35.6	0.38
46.0	33.9	0.35	35.2	0.33	36.5	0.30
Standard hook	for 3 ton					
Hook weight	60 kg					
Parts line	1					
Critical boom angle	42°					

(Unit: Metric ton)

Outriggers intermediately extended without front jack – 360° full range Outriggers fully extended without front jack – over front						
Boom angle (°)	33 m Boom + 8.7 m Jib					
	Offset 5°		Offset 17°		Offset 30°	
	Working radius (m)	Load (t)	Working radius (m)	Load (t)	Working radius (m)	Load (t)
80.0	8.0	3.00	9.6	2.20	11.3	1.60
76.0	11.0	3.00	12.5	2.20	14.0	1.60
72.5	13.5	2.56	15.0	1.94	16.2	1.50
71.0	14.5	2.14	16.0	1.84	17.3	1.47
70.0	15.1	1.90	16.6	1.65	18.0	1.45
68.0	16.3	1.48	17.8	1.28	19.0	1.18
65.0	18.1	0.97	19.5	0.86	20.7	0.78
60.0	21.0	0.37	22.4	0.30	23.3	0.30
Standard hook	for 3 ton					
Hook weight	60 kg					
Parts line	1					
Critical boom angle	58°					

(Unit: Metric ton)

Outriggers intermediately extended without front jack – 360° full range Outriggers fully extended without front jack – over front						
Boom angle (°)	33 m Boom + 14.5 m Jib					
	Offset 5°		Offset 17°		Offset 30°	
	Working radius (m)	Load (t)	Working radius (m)	Load (t)	Working radius (m)	Load (t)
80.0	9.9	2.00	12.5	1.30	15.1	0.90
77.7	12.0	2.00	14.5	1.30	16.9	0.90
76.3	13.2	1.85	15.7	1.24	18.0	0.90
73.0	15.6	1.57	18.2	1.10	20.4	0.84
69.0	18.7	1.31	21.2	0.95	23.3	0.76
68.4	19.1	1.18	21.7	0.92	23.8	0.75
67.8	19.5	1.08	22.0	0.88	24.2	0.73
64.0	22.0	0.60	24.4	0.49	26.4	0.43
62.0	23.4	0.39	25.6	0.33	27.5	0.30
Standard hook	for 3 ton					
Hook weight	60 kg					
Parts line	1					
Critical boom angle	60°					

(Unit: Metric ton)