

Kato

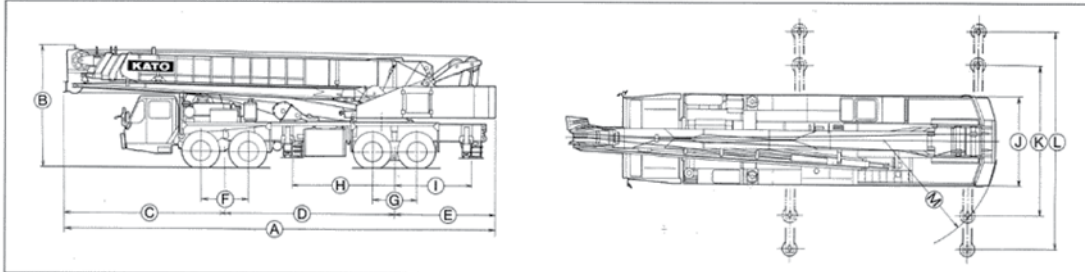
NK500E

Truck Mounted



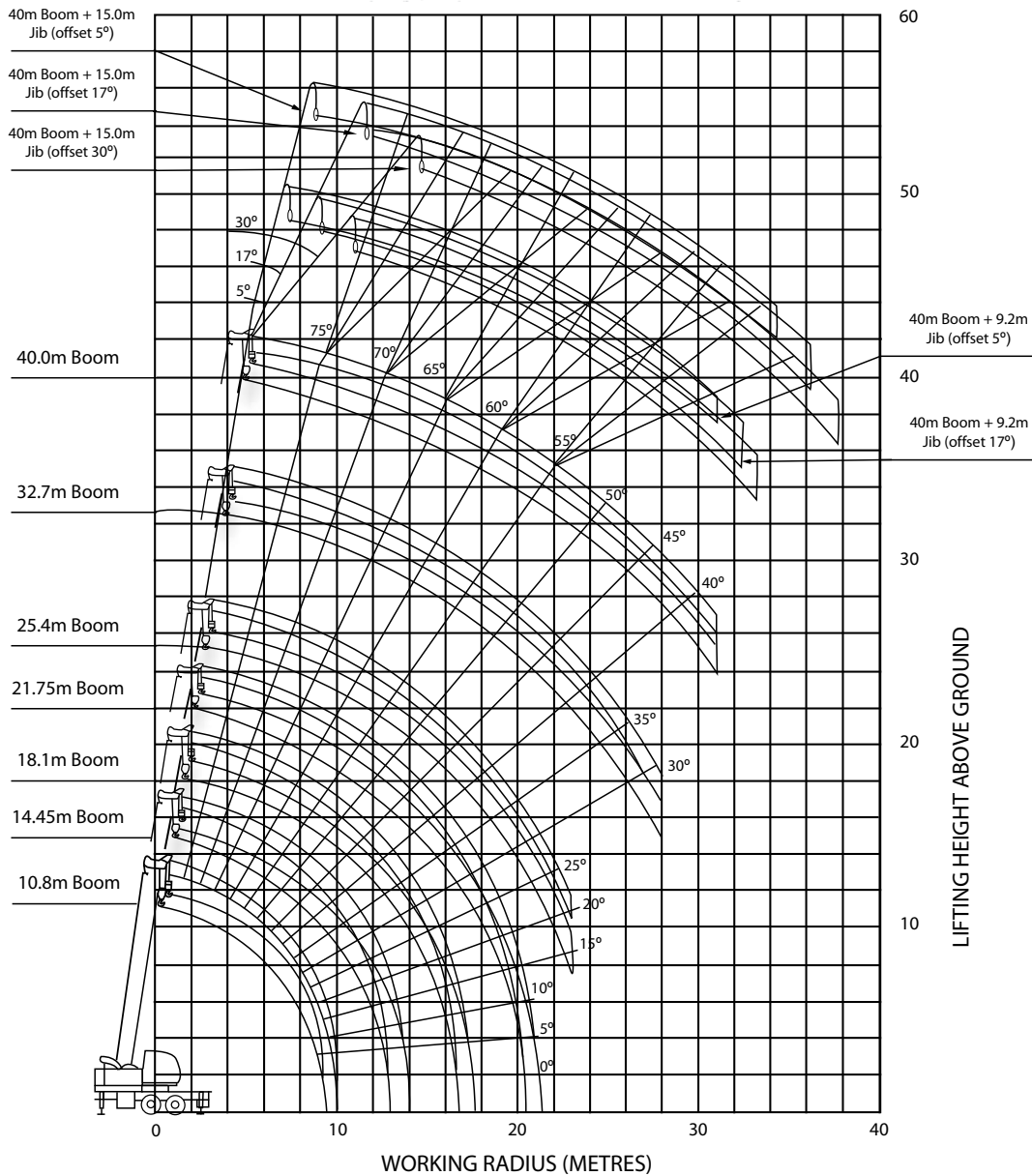


DIMENSIONS / WORKING RANGE



Carrier name Model	A	B	C	D	E	F	G	H	I	J	K	L	M
MITSUBISHI KJ505S	13,300	3,800	4,990	5,250	3,060	1,450	1,350	3,150	2,450	2,750	4,850	7,200	3,520
NISSAN DIESEL KG54T	13,300	3,800	5,125	5,215	2,960	1,470	1,400	3,340	2,350	2,820	4,850	7,200	3,520

(Unit: mm)



50 TONNE Kato NK500E



50 TONNE

Kato NK500E Truck Mounted

RATED LIFTING CAPACITY

Working radius (m)	10.8 m Boom	14.5 m Boom	18.1 m Boom	21.75 m Boom	25.4 m Boom	32.7 m Boom	40 m Boom
3.0	50.50	28.00	28.00	24.00			
3.5	42.20	28.00	28.00	24.00	18.00		
4.0	37.00	28.00	28.00	24.00	18.00		
4.5	33.00	28.00	28.00	24.00	18.00		
5.0	30.20	28.00	28.00	24.00	18.00	13.00	
5.5	27.50	26.50	25.60	23.20	18.00	13.00	
6.0	25.00	24.00	23.50	21.50	18.00	13.00	
6.5	22.70	22.30	21.80	19.90	18.00	13.00	7.50
7.0	22.70	20.30	20.00	18.40	16.80	13.00	7.50
7.5	18.90	18.60	18.50	17.10	15.70	13.00	7.50
8.0	17.40	17.10	17.00	15.90	14.60	12.30	7.50
8.5	15.95	15.70	15.60	14.65	14.00	11.60	7.50
9.0	14.35	14.20	14.10	13.50	13.20	11.00	7.50
9.5		12.85	12.70	12.55	12.45	10.50	7.50
10.0		11.70	11.55	11.45	11.40	10.00	7.30
11.0		9.75	9.60	9.50	9.45	9.10	6.80
12.0		8.20	8.10	8.00	7.95	8.30	6.30
13.0		7.00	6.85	6.75	6.70	7.55	5.90
14.0			5.85	5.75	5.70	6.50	5.50
16.0			4.25	4.15	4.10	4.95	4.70
18.0				3.00	2.95	3.75	4.00
20.0				2.10	2.05	2.80	3.30
22.0					1.30	2.10	2.55
23.0					1.00	1.80	2.25
24.0						1.50	2.00
26.0						1.05	1.50
28.0						0.65	1.10
30.0							0.75
31.0							0.65
Standard hook	for 50.5 ton				for 20 ton		
Hook weight	300 kg						
Parts line	12	7	7	6	5	4	3
Critical boom angle	-	-	-	-	-	25	35

BASED ON * BS 1757 :1986
 * DIN 15019-2
 * 75% of tipping loads

**FULLY HYDRAULIC TRUCK CRANE
 SPECIFICATIONS
 JIB OFFSET 5', 25', 45', (OPTION)**