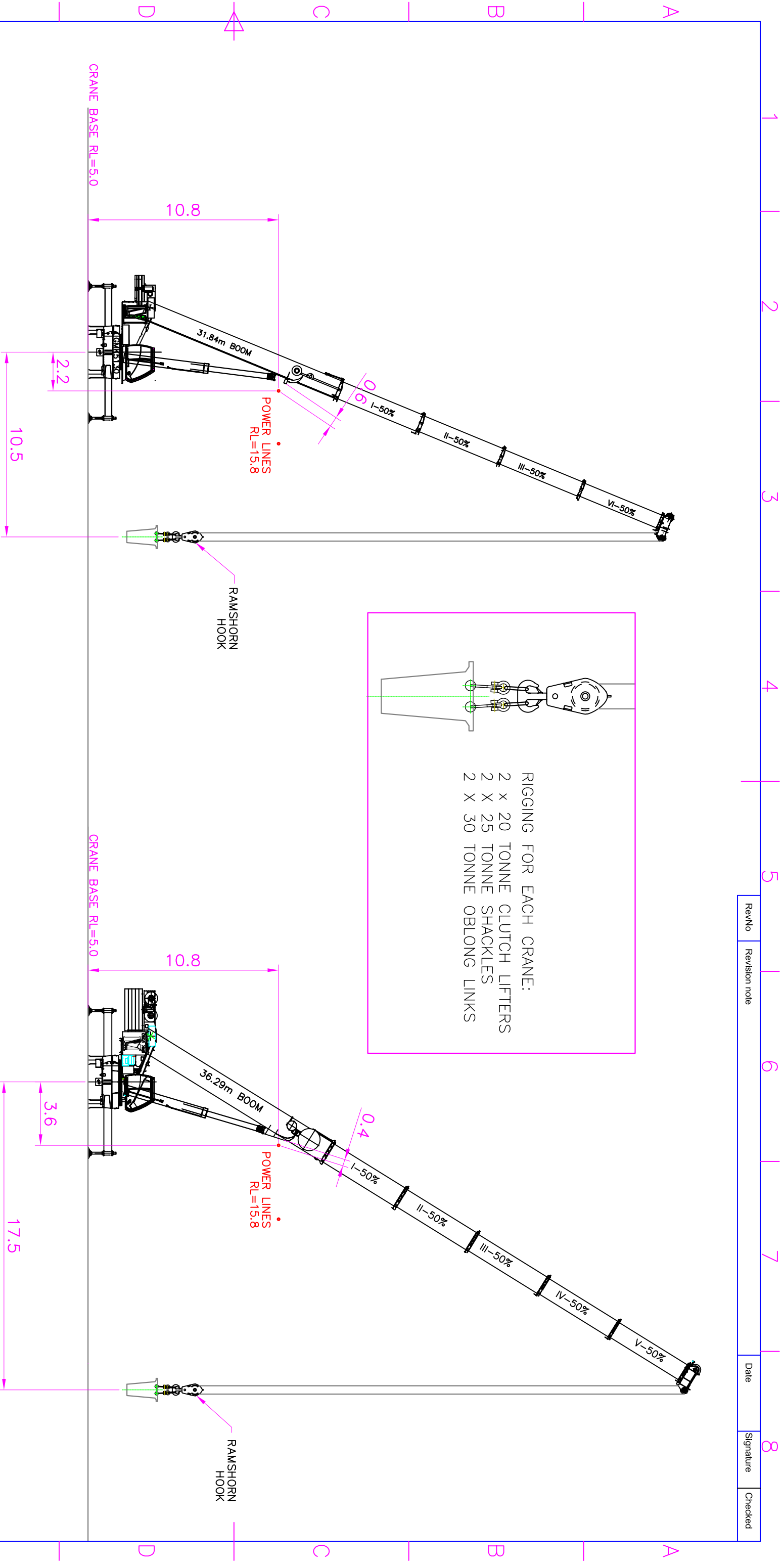
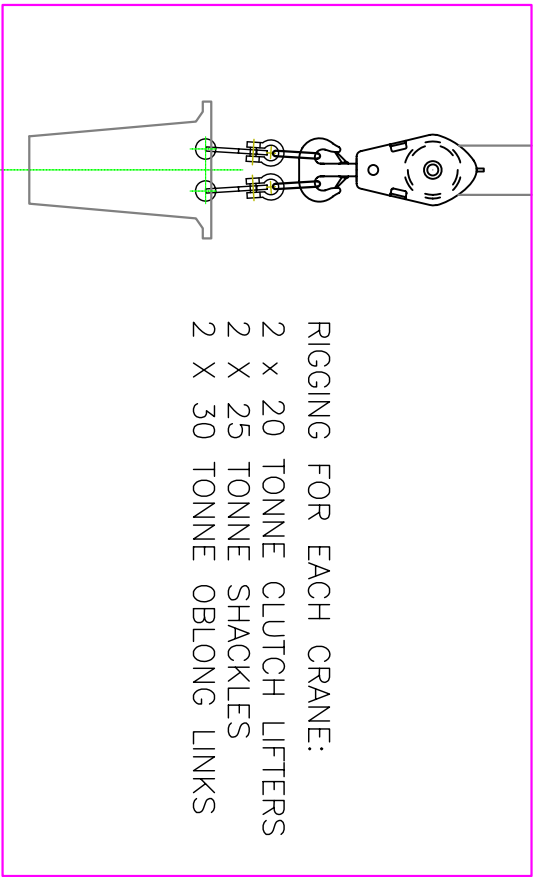


RevNo	Revision note	Date	Signature	Checked



GMK5130 CRANE
AT NORTH ABUTMENT

GMK5220 CRANE
AT SOUTH ABUTMENT

BEAM WEIGHT: 56 TONNE

DUAL LIFT	GROVE GMK 5130	GROVE GMK 5220
CRITICAL BEAM WEIGHT= 56 TONNE	28 TONNE	28 TONNE
RIGGING & HOOKBLOCK (EST)	1.5 TONNE	1.5 TONNE
TOTAL LIFT WEIGHT (+20%)	35.4 TONNE	35.4 TONNE
BOOM LENGTH	31.84m	36.29m
COUNTERWEIGHT	40.1 TONNE	77 TONNE
MAX LIFT RADIUS	10m	17m
CRANE CAPACITY @ MAX RADIUS	37 TONNE	36.25 TONNE

THIS DRAWING & INFORMATION CONTAINED HEREIN IS PROPRIETARY TO METCALF CRANE SERVICES PTY LTD AND SHALL NOT BE REPRODUCED, COPIED OR DISCLOSED IN WHOLE OR IN PART FOR ANY OTHER PURPOSE WITHOUT THE WRITTEN PERMISSION OF METCALF CRANE SERVICES PTY LTD

Drawn by: T. Arena	Checked by	Approved by - date PRELIMINARY	File name	Date 30/05/2008	Scale
METCALF CRANE SERVICES PTY LTD 5 GREEN STREET THOMASTOWN VICTORIA 3074 PH 03 9464 6811 FAX 03 9464 6911			Client: JOHN HOLLAND GROUP	Project: COWIES CREEK RAIL BRIDGE	Edition Sheet 2 of 2